

**CONVEX**

○ ● ● technology S.L.

Logistics and packaging systems

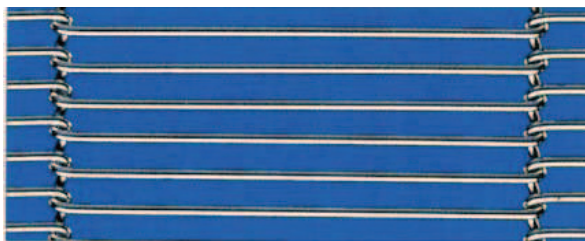


ransportadores de malla

serie TM



# Transportadores de malla metálica serie TM



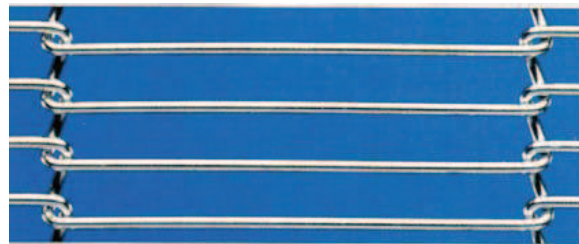
Paso 4,3 mm Ø 1,27 mm



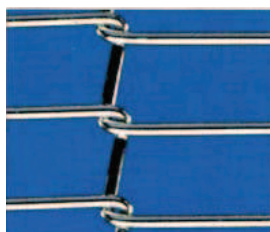
Paso 5,5 mm Ø 1 mm



Paso 6 mm Ø 1,27 mm



Paso 7,26 mm Ø 1,57 mm



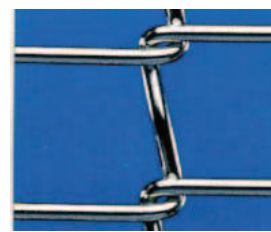
Paso 12,7 mm  
Ø 2,34 mm



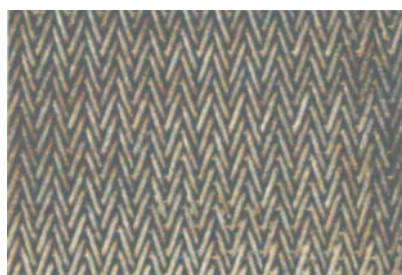
Paso 12,7 mm  
Ø 2,34 mm



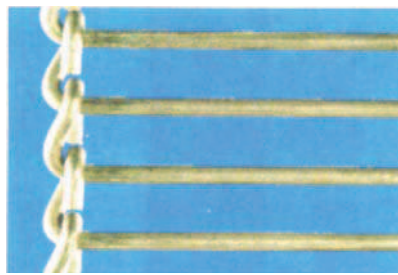
Paso 9,6 mm  
Ø 2,08 mm



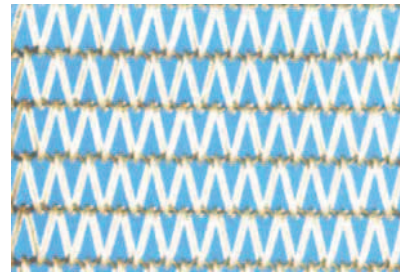
Paso 20,32 mm  
Ø 2,34 mm



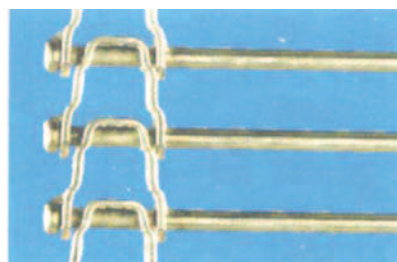
Cordón entrelazado



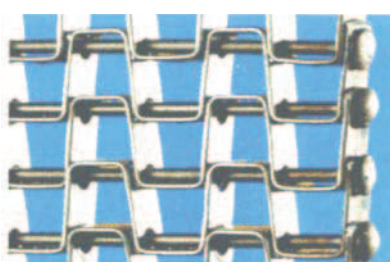
Cinta Ladder



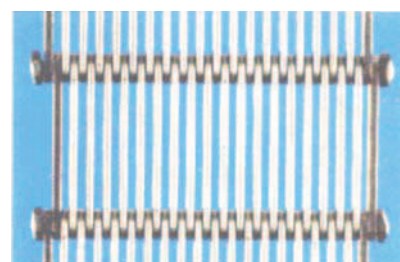
Espiral



Cinta de varilla



Fil-Pla



Alambre en eslabón

**CONVEX**

technology S.L.  
Logistics and packaging systems

C/ Balmes, 184 - 5º 4ª - 08006 Barcelona (España) - Tel. 93 706 52 28  
info@convex-technology.es - <http://www.convex-technology.es>

**cadex**<sup>®</sup>